

Fatherhood & Reentry: Engaging Families in the Reentry Process

June 9, 2016

Presented by



the NATIONAL REENTRY
RESOURCE CENTER

— A project of the CSG Justice Center —

The Council of State Governments (CSG) Justice Center

- National non-profit, non-partisan membership association of state government officials
- Engages members of all three branches of state government
- Justice Center provides practical, non-partisan advice informed by the best available evidence

Web: csgjusticecenter.org | Twitter: [@CSGJC](https://twitter.com/CSGJC)



The National Reentry Resource Center

www.nationalreentryresourcecenter.org

- ▶ The NRRC is a project of the CSG Justice Center and is supported by the Bureau of Justice Assistance.
- ▶ NRRC staff have worked with nearly 600 SCA grantees, including 40 state corrections agencies.
- ▶ The NRRC provides individualized, intensive, and targeted technical assistance training and distance learning to support SCA grantees.

Reentry Matters: Strategies and Successes of Second Chance Act Grantees Across the United States
November 2013

With over 95 percent of people in the nation's state prisons expected to be released at some point, officials at all levels of government recognize the need for initiatives to support the successful reentry of these individuals to their communities. For the estimated 60,000 youth incarcerated in juvenile detention and correctional facilities on any given day, there is a particular urgency to help them avoid crime and improve their prospects for a successful future when released.

In 2008, Congress responded to these needs by passing the Second Chance Act, first-of-its-kind legislation that was enacted with bipartisan support and backed by a broad spectrum of leaders in law enforcement, corrections, courts, behavioral health, and other areas. The legislation authorizes federal grants that support reentry programs for adults and juveniles, nearly 600 of which have been awarded by government agencies and nonprofit organizations in 49 states by the U.S. Department of Justice's Office of Justice Programs.

The program snapshots below illustrate the positive impact these reentry initiatives can have by focusing on areas vital to reintegration back into the community, including employment, education, mentoring, and substance abuse and mental health treatment. Also highlighted are programs that address the needs of a particular population, such as youth, women, and tribal communities. Representing a wide range of populations served, these programs also demonstrate the diversity of approaches that can address recidivism and increase public safety.

Supporting Employment and Job Readiness

Employment is widely seen by practitioners, researchers, policymakers, and formerly incarcerated individuals alike as crucial to successful reintegration into the community and decreasing the risk of recidivism. Yet the stigma of incarceration and having been out of the workforce for a period of time often contribute to the challenges individuals face when trying to find a job after release. Individuals who have been incarcerated

have been shown to earn 40 percent less annually than they had earned prior to incarceration and are likely to have less upward economic mobility over time than those who have not been incarcerated.

Meaningful employment can help individuals succeed in the community after release from incarceration because it reduces their time and efforts on pro-social activities, making them less likely to engage in risky behaviors or interact with criminal associates. Reentry programs that focus on preparing individuals in prisons and jails for employment can have a significant impact on these individuals, their families, and their communities.

Key Terms and Definitions

MISSION ACCOMPLISHED?
THE CHANGING LANDSCAPE OF JUVENILE INCARCERATION

SUCCESSSES
Due to high costs and poor outcomes, states have dramatically reduced incarcerated youth

High costs
\$148,767
Average cost of incarceration per youth per year

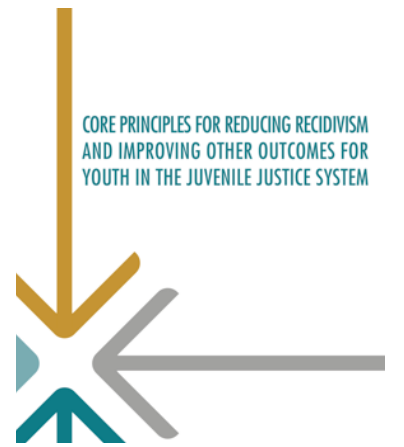
Poor outcomes
80%
Recidivism rate in some states for youth three years after release from incarceration

Number of youth incarcerated nationwide, 1997-2013

CHALLENGES
The majority of incarcerated youth are now in private or locally-run facilities but most states do not provide sufficient oversight of these facilities

Change in Youth Incarceration by Facility Type

INTEGRATED REENTRY and EMPLOYMENT STRATEGIES
Reducing Recidivism and Promoting Job Readiness



The National Reentry Resource Center

Please register for the monthly NRRC newsletter:


csgjusticecenter.org/subscribe




the NATIONAL REENTRY
RESOURCE CENTER
— A project of the CSG Justice Center —

[Share](#) [Tweet](#) [Forward to Friend](#) [Share](#)

Second Chance Act Grantee Profiles

[Washington State Works to Improve Employment Outcomes for Incarcerated Youth](#)

[Vermont DOC Builds Commitment to Restorative Justice](#)

[Allegheny County Officials, Employers Join OJP's Push to Eliminate Labels for People with Criminal Records](#)

New Publications and Resources

[State Identification: Reentry Strategies for State and Local Leaders](#)
National Reentry Resource Center

[Protecting the Fair Housing Rights of People with Criminal Records](#)
HUD, the Shriver Center, and the Vera Institute of Justice

Webinar: [Reentry Housing Options for Sex Offenders](#)
National Reentry Resource Center

[Beyond the Box Resource Guide](#)
U.S. Department of Education

Funding and Other Opportunities

[Smart on Juvenile Justice: Reducing Out-of-Home Placement](#)
OJJDP
Deadline: May 25

[National League of Cities Leadership Academy](#)
National League of Cities Institute of Youth, Education, and Families
Deadline: May 26

[Smart on Juvenile Justice: Statewide Juvenile Justice Reform](#)
OJJDP
Deadline: May 31

[Second Chance Act Smart Reentry Program](#)
BJA
Deadline: June 9

[Juvenile Probation Reform Academy](#)
American Probation and Parole Association, The CSG Justice Center, and the Robert F. Kennedy National Resource Center for Juvenile Justice
Deadline: June 10

[2016 School-Justice Partnerships Certificate Program](#)
The Center for Juvenile Justice Reform at Georgetown University's McCourt School of Public Policy
Deadline: June 20

Presenters

- ▶ **Ronin A. Davis,**
Grantee Technical Assistance Manager
The Council of State Governments
Justice Center
- ▶ **Erik Vecere,**
Vice President of Program Support
National Fatherhood Initiative
- ▶ **Ron and Catherine Tijerina,**
Co-Executive Directors
The RIDGE Project

JUSTICE ★ **CENTER**
THE COUNCIL OF STATE GOVERNMENTS
Collaborative Approaches to Public Safety



**National
Fatherhood
Initiative®**

RIDGE | The Ridge Project®
Building a Legacy of Strong Families

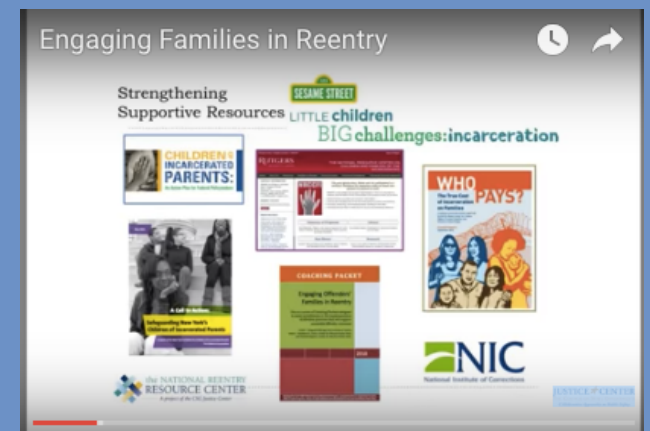
Fatherhood and Reentry Webinar Series

▶ Key Areas of Focus

- ▶ Pre-release and reentry family engagement
- ▶ Post-release engagement and retention of fathers
 - ▶ Tentatively scheduled for July 14
- ▶ Program sustainability
 - ▶ Tentatively scheduled for August 18

Engaging Families in Reentry and Demonstrating Improved Outcomes for Family Members of Returning Fathers.

Available at
csgjusticecenter.org/nrrc/webinars



Why engage families?

- ▶ Families affected by incarceration face many challenges, which have been associated with negative outcomes for children.
- ▶ Parental incarceration is recognized as an “adverse childhood experience” (ACE) and can significantly increase the likelihood of long-time negative outcomes for children.
- ▶ Research suggests that more visits while incarcerated can reduce recidivism

Engaging Families in the Reentry Process

National Fatherhood Initiative[®]

Transforming organization and communities by equipping them to intentionally and proactively engage fathers in their children's lives.

NFI's vision is for every child to grow up with an involved, responsible, and committed father.



**National
Fatherhood
Initiative[®]**

www.fatherhood.org

Engaging Families in the Reentry Process

The RIDGE Project

Founded by Ron & Catherine Tijerina in 2000, The RIDGE Project is a Christian, non-profit organization dedicated to empowering generational responsibility in individuals and improving the lives of families throughout the state of Ohio.

The RIDGE Project believes that strong families produce strong children, who will pass on that legacy of strength to future generations.

Overview

- The importance of engaging the families of incarcerated fathers
- Challenges connecting with family members of incarcerated fathers
- Implementing a family-focused approach
 - Increasing facilities' involvement around family engagement
 - Incarcerated father & family assessment
 - Incarcerated father case planning
 - Family visitation
 - Measuring success



Engaging Families of Incarcerated Fathers

- Studies indicate*:
 - Families are the major provider of housing for incarcerated fathers upon release
 - Aside from employment, families are the most common source of financial support for incarcerated fathers upon release
 - Many incarcerated fathers use family members, relatives, or friends in order to secure a job following release
 - Incarcerated fathers rely heavily on family members for their transportation needs

* (2010) US Department of Justice, *Engaging Offenders' Families in Reentry*



**National
Fatherhood
Initiative®**

www.fatherhood.org

Engaging Families of Incarcerated Fathers

- Studies indicate*:
 - Family members take over responsibilities for child rearing in the absence of the incarcerated father
 - Family members provide emotional support during the transition
 - Surveys of incarcerated fathers cite family support as important to keeping them from recidivating

* (2010) US Department of Justice, *Engaging Offenders' Families in Reentry*



**National
Fatherhood
Initiative®**

www.fatherhood.org

Engaging Families of Incarcerated Fathers

- The Indiana DOC

Recidivism by Visitation			
Visit Type	Number Released	Number of Recidivists	Recidivism Rate
No Visits	8,044	3,302	41.0%
Any Visit	9,443	3,334	35.3%
Child	1,841	526	28.6%
Spouse	1,180	340	28.8%
Parent	5,896	2,075	35.2%
Family	7,437	2,564	34.5%
Overall	17,487	6,636	37.9%



Engaging Families of Incarcerated Fathers

The D.C. based Center for Law and Social Policy has noted:

“The desire of parents to reunite with their children is often the key motivation for helping them turn their lives around.”



**National
Fatherhood
Initiative®**

www.fatherhood.org

Challenges Connecting with Family Members

- Travel distance
- Security requirements
- Location of visits within the facility
- Personal searches
- Waiting times
- Restricted visiting hours
- Expense of phone calls



**National
Fatherhood
Initiative®**

www.fatherhood.org

Challenges Connecting with Family Members

- How the RIDGE Project addresses some of these challenges
 - RIDGE acts as the conduit between families and institutions
 - RIDGE supports families efforts to come together in meaningful ways
 - RIDGE's family programming department organizes and facilitates events that encourage father/child interaction and bonding
 - RIDGE delivers TYRO programming which activates and strengthens an individual's call to fatherhood



Implementing a Family-Focused Approach

- **Element #1 – Increasing facilities' involvement around family engagement**
 - Connect your fatherhood program to their priorities
 - Share studies of your curriculum that show impact
 - Show how fatherhood programs create trust between facility staff and incarcerated fathers



Implementing a Family-Focused Approach

- How the RIDGE Project increases facilities' involvement around family engagement
 - RIDGE staff members build relationships with institution staff members in a way that fosters cooperation and collaboration
 - The TYRO curriculum is evidence-based and has been thoroughly evaluated to show positive impact upon fathers commitment to their families
 - Because of this, TYRO participants have been shown to be more committed to good behavior

A TYRO is a novice, an apprentice, someone learning something new, a warrior or founding father. Although he continues to learn new skills and gain experience a TYRO is a man who is willing to war – to fight – for his family.



Implementing a Family-Focused Approach

- **Element #2 – Incarcerated father & family assessment**
 - Gather more comprehensive information about their families
 - Domains should include family, pro-social supports, extent of parental supports, and strengths
 - Use open-ended questions



Implementing a Family-Focused Approach

- How the RIDGE Project assesses the families of incarcerated fathers
 - RIDGE uses pre/post tests as well as participant surveys to gather client feedback
 - RIDGE's TYRO Tracker system compiles and tracks all data
 - TYRO365 is a comprehensive digital, client-engagement tool that collects and analyzes data and provides client-tailored content, all in real time



Implementing a Family-Focused Approach

■ Element #3 – Case planning

- Ensure the fathers' risk level guides the level and type of supervision and programming
- Consider family strengths
- Be aware of referral options inside and outside of the facility



**National
Fatherhood
Initiative®**

www.fatherhood.org

Implementing a Family-Focused Approach

- How the RIDGE Project maximizes case planning
 - RIDGE facilitators utilize all information gathered via the previously mentioned methods to tailor a specific path for each client based on their needs
 - Families are evaluated based on strengths and weaknesses
 - RIDGE works collaboratively with entities both inside and outside each facility



Implementing a Family-Focused Approach

■ Element #4 – Family Visitation

- Build visitation into fathers' regular routine
- Build family engagement into hiring procedures
- Offer visitation hours outside regular working hours
- Encourage dads to visit with their children as frequently as possible
- Create a welcoming environment
- Inform family members of policies and events
- Have a hotline for families
- Have case managers present
- Provide incentives



Implementing a Family-Focused Approach

- How the RIDGE Project encourages family visitation
 - Family visitation is a key component to RIDGE's family strengthening mission
 - "Time with Dad," "Family Day," and "Father/Daughter Dance" events reward responsible fathers and encourage regular visitation
 - All events are relaxed, fun times that give families an environment that allows for growth and bonding
 - Family programming staff communicate with family members regarding all aspects of each event



Implementing a Family-Focused Approach

■ Element #5 – Measuring Success

- Disciplinary infractions
- Recidivism
- Quantitative data
- Qualitative data



**National
Fatherhood
Initiative®**

www.fatherhood.org

Implementing a Family-Focused Approach

- How the RIDGE Project measures success
 - RIDGE has achieved the following notable outcomes:
 - TYROs are 46.2% less likely to have an infraction than non-TYROs (Belmont Correctional Institution, 2014)
 - 36% reduced recidivism rate for new crimes (Saint Wall Street, 2013)
 - 97% of TYRO Dads participants reported a strong to very strong commitment to fatherhood (post-test)
 - 98.9% of TYRO Dads participants and 97.5% of Couples Communication participants improved in at least one responsible parenting or healthy marriage category (pre/post survey)



Time for Questions



**National
Fatherhood
Initiative®**

www.fatherhood.org

RIDGE | The
Ridge
Project
Building a Legacy of Strong Families



Contact Information

▶ **Erik Vecere**

Vice President of Program Support
National Fatherhood Initiative
evecere@fatherhood.org



**National
Fatherhood
Initiative®**

www.fatherhood.org

▶ **Ron and Catherine Tijerina,**

Co-Executive Directors
The RIDGE Project
ron@theridgeproject.com
catherine@theridgeproject.com



▶ **Ronin A. Davis**

Grantee Technical Assistance Manager
The Council of State Governments Justice Center
rdavis@csg.org

